

Door Stops





Dome Door Stop

		Standard	Distressed	ETERNA
2312	Low Dome Stop	20.61	24.47	32.20
2313	High Dome Stop	21.90	25.76	33.49
Replacement Rubber				
2314	Replacement Rubber for 2312 and 2313	6.44		
2314B	Replacement Black Rubber for 2312 + 2313	9.02		

All Prices in US Dollars - Prices Subject to Change Without Notice
Please Check with Customer Service for Up to Date Pricing.



Upright Floor Door Stop

		Standard	Distressed	ETERNA
2320	Upright Floor Door Stop	50.23	56.67	63.11
Replacement Rubber				
2324	Replacement Rubber for 2320	6.44		
2324B	Replacement Black Rubber for 2320	9.02		

All Prices in US Dollars - Prices Subject to Change Without Notice
Please Check with Customer Service for Up to Date Pricing.



Round Floor Door Stop

		Standard	Distressed	ETERNA
2325	Round Floor Door Stop	36.71	43.79	51.52
Replacement Rubber				
2326	Replacement Rubber for 2325	6.44		
2326B	Replacement Black Rubber for 2325	9.02		

Low Dome Door Stop



2312 Low Dome Door Stop

- Solid Forged Brass Dome Stop features half dome design to minimize stumbling hazards. The thick, rubber bumper has concealed mounting allowing easy replacement of bumper.
- Packed 10 per box with flat head wood screw, plastic plug.
- Replacement Rubber - 2314.
- Black Replacement Rubber available at additional price - 2314B.
- Dimensions: Height 1.00" Base Diameter 1.85" Base Height 0.115"

High Dome Door Stop



2313 High Dome Door Stop

- Solid Forged Brass construction Door Stop is designed to allow use with a variety of door threshold heights.
- Packed 10 per box with flat head wood screw, plastic plug.
- Replacement Rubber - 2314.
- Black Replacement Rubber available at additional price - 2314B.
- Dimensions: Height 1.30" Base Diameter 1.85" Base Height 0.40"

Upright Floor Door Stop



2320 Upright Floor Door Stop

- Forged Brass construction Door Stop is designed to allow use with a variety of door threshold heights.
- Packed 5 per box with oval head wood screw, plastic plug, hanger bolt and lead anchor.
- Replacement Rubber - 2324.
- Black Replacement Rubber available at additional price - 2324B.
- Dimensions: Height 2.625"

Round Floor Door Stop



2325 Round Floor Door Stop

- Machined from Solid Brass Bar Stock.
- Fully concealed screw mounting.
- Stops door from any angle.
- Packed 5 per box with fasteners.
- Replacement Rubber - 2326.
- Black Replacement Rubber available at additional price - 2326B.
- Dimensions: Hight 1.50" Diameter 1.185" Hight to Center of Rubber 0.95"



Baseboard Door Stop

		Standard	Distressed	ETERNA
2340	3.0" Baseboard Door Stop	25.63	29.62	36.06
2341	3.75" Baseboard Door Stop	26.85	31.56	38.64
Replacement Rubber				
2349	Replacement Rubber for 2340 and 2341	6.44		
2349B	Replacement Black Rubber for 2340 + 2313	9.02		

All Prices in US Dollars - Prices Subject to Change Without Notice
Please Check with Von Morris Customer Service for Up to Date Pricing.



Contemporary Baseboard Stop

		Standard	Distressed	ETERNA
2345	Contemporary Baseboard Stop 3.5"	25.63	29.62	36.06
Extensions				
2346	0.5" Extension for 2345	7.41	8.73	9.53
2347	1.0" Extension for 2345	9.75	11.47	12.56
Replacement Rubber				
2349	Replacement Rubber for 2320	6.44		
2349B	Replacement Black Rubber for 2320	9.02		

3" Baseboard Door Stop



2340 3" Baseboard Door Stop

- Solid Forged Brass construction with hexagon section and screwdriver slot on stem for ease of installation.
- Rubber Bumper is easily replaceable.
- Packed 10 per box in individual poly bags.
- Replacement Rubber - 2349.
- Black Replacement Rubber available at additional price - 2349B.

3.75" Baseboard Door Stop



2341 3.75" Baseboard Door Stop

- Solid Forged Brass construction with hexagon section on stem for ease of installation.
- Rubber Bumper is easily replaceable.
- Packed 10 per box in individual poly bags.
- Replacement Rubber - 2349.
- Black Replacement Rubber available at additional price - 2349B.
- Dimensions: Length 3.75"

Contemporary Baseboard Door Stop



2345 Contemporary Baseboard Stop

- Machined from Solid Brass Bar Stock.
- Fully concealed screw mounting.
- Packed 8 pcs. per box with fasteners.
- Replacement rubber - 2349.
- Black replacement rubber available at additional price - 2349B.
- Dimensions: Length 3.50" Diameter 0.625"

Contemporary Baseboard Extensions



2346 Contemporary Baseboard Extension

- Machined from Solid Brass Bar Stock.
- Machined to thread into 2345 to extend length of Bumper to 4", 4.5", or even 5".
- Packed 40 pcs. per box.
- Weight: 1.62 lbs. per box.
- Dimensions: Length 0.50" Diameter 0.625"

Contemporary Baseboard Extensions



2347 Contemporary Baseboard Extension

- Machined from Solid Brass Bar Stock.
- Machined to thread into 2345 to extend length of Bumper to 4.5", 5.0" or even 5.5".
- Packed 25 pcs. per box.
- Weight: 1.92 lbs. per box.
- Dimensions: Length 1.00" Diameter 0.625"

All Prices in US Dollars - Prices Subject to Change Without Notice
Please Check with Customer Service for Up to Date Pricing.



Commerical Upright Floor Door Stop

		Standard	Distressed	ETERNA
2351	Commerical Floor Door Stop	64.96	77.28	89.60



Commerical Upright Floor Door Stop with Holder

		Standard	Distressed	ETERNA
2352	Commerical Floor Door Stop with Holder	72.80	86.24	98.56



Commercial Wall Mount Door Stop

		Standard	Distressed	ETERNA
2353	Commerical Wall Mount Door Stop	64.96	77.28	89.60



DISCONTINUED WHEN OUT

Commerical Wall Mount Door Stop with Holder

		Standard	Distressed	ETERNA
2354	Commerical Wall Mount Door Stop with Holder	83.72	99.18	113.34

Replacement Rubber

		Standard
2359	Replacement Rubber for 2351, 2352, 2353 and 2354	6.44
2359B	Replacement Black Rubber for 2351, 2352, 2353 and 2355	9.02

Commerical Upright Floor Door Stop



2351 Commerical Upright Floor Door Stop

- Federal Specification Equivalents: Government Type: 1328.
- Features: Solid Forged Brass, Commercial Grade.
- BHMA Designations: L02121 and L02131.
- Packed: 1 per box with matching wood screws and hanger bolt and expansion shield.
- Weight: 0.66 lbs. per box.
- Replacement Rubber - 2359.
- Black Replacement Rubber available at additional price - 2359B.

Dimensions: Height 4.00" Base Diameter 2.25"

Commerical Upright Floor Door Stop with Holder



2352 Commerical Upright Floor Door Stop with Holder

- Features: Solid Forged Brass stop, hook and plate, Commercial Grade.
- Federal Specification Equivalents: Government Type: 1329.
- BHMA Designations: L01361 and L01371.
- Packed: 1 per box with matching wood screws, hanger bolt and expansion shield.
- Weight: 0.92 lbs. per box.
- Replacement Rubber - 2359.
- Black Replacement Rubber available at additional price - 2359B.

Commercial Wall Mount Door Stop



2353 Commercial Wall Mount Door Stop

- Features: Solid Forged Brass, Commercial Grade.
- Federal Specification Equivalents: Government Type: 1320.
- BHMA Designations: L02011 and L02021.
- Packed: 1 per box with matching wood screws and expansion shield.
- Weight: 0.60 lbs. per box.
- Replacement Rubber - 2359.
- Black Replacement Rubber available at additional price - 2359B.
- Dimensions: Projection 3.50" Base Diameter 2.25"

Commercial Wall Mount Door Stop with Holder



2354 Commercial Wall Mount Door Stop with Holder

- Features: Solid Forged Brass stop, hook and plate, Commercial Grade.
- Federal Specification Equivalents: Government Type: 1321.
- BHMA Designations: L01341 and L01351.
- Packed: 1 per box with matching wood screws, hanger bolt and expansion shield.
- Weight: 0.82 lbs. per box.
- Replacement Rubber - 2359.
- Black Replacement Rubber available at additional price - 2359B.
- Dimensions: Projection 3.50" Base Diameter 2.25"



All Prices in US Dollars - Prices Subject to Change Without Notice
Please Check with Customer Service for Up to Date Pricing.

Art Deco Upright Floor Door Stop

		Standard	Distressed	ETERNA
STP022	Art Deco Upright Floor Door Stop	180.00	198.00	216.00



Art Deco Upright Floor Door Stop with Magnet Holder

		Standard	Distressed	ETERNA
STP022M	Art Deco Floor Door Stop with Magnet Holder	215.00	237.00	258.00



Art Deco Wall Mount Door Stop

		Standard	Distressed	ETERNA
STP024	Art Deco Wall Mount Door Stop	180.00	198.00	216.00



Art Deco Wall Mount Door Stop with Magnet Holder

		Standard	Distressed	ETERNA
STP024M	Art Deco Wall Mount Door Stop with Magnet Holder	215.00	237.00	258.00

Replacement Rubber

		Standard
2359	Replacement Rubber for STP022 and STP024	5.60
2359B	Replacement Black Rubber for STP022 and STP024	7.84
2359BM	Replacement Black Rubber for STP022M and STP024M. Magnet rubber only available in black.	25.75

Art Deco Upright Floor Door Stop



STP022 Art Deco Upright Floor Door Stop

- Art Deco design coordinates with our Art Deco Suited Hardware.
- Features: Solid CNC Machined Brass, Heavy Duty.
- Packed: 1 per box with matching wood screws and hanger bolt and expansion shield.
- Weight: 0.66 lbs. per box.
- Replacement Rubber - 2359.
- Black Replacement Rubber available at additional price - 2359B.

Dimensions: Height 2.75" Base Diameter 2.25"

Art Deco Upright Floor Door Stop with Magnet Holder



STP022 Art Deco Upright Floor Door Stop with Magnet Holder

- Art Deco design coordinates with our Art Deco Suited Hardware.
- Features: Solid CNC Machined Brass, Heavy Duty.
- Neodymium Supermagnets are concealed within the rubber bumper. Supplied with a brass plate and powdercoated steel insert for mounting to the door sash.
- Packed: 1 per box with matching wood screws and hanger bolt and expansion shield.
- Weight: 0.66 lbs. per box.
- Rubber only available in Black.
- Replacement Rubber - 2359BM.

Dimensions: Height 2.75" Base Diameter 2.25"

Art Deco Wall Mount Door Stop



STP024 Art Deco Wall Mount Door Stop

- Art Deco design coordinates with our Art Deco Suited Hardware.
- Features: Solid CNC Machined Brass, Heavy Duty.
- Packed: 1 per box with matching wood screws and hanger bolt and expansion shield.
- Weight: 0.66 lbs. per box.
- Replacement Rubber - 2359.
- Black Replacement Rubber available at additional price - 2359B.

Dimensions: Projection 3.25" Base Diameter 2.25"

Art Deco Wall Mount Door Stop with Magnet Holder



STP024M Art Deco Wall Mount Door Stop with Magnet Holder

- Art Deco design coordinates with our Art Deco Suited Hardware.
- Features: Solid CNC Machined Brass, Heavy Duty.
- Neodymium Supermagnets are concealed within the rubber bumper. Supplied with a brass plate and powdercoated steel insert for mounting to the door sash.
- Packed: 1 per box with matching wood screws and hanger bolt and expansion shield.
- Weight: 0.66 lbs. per box.
- Rubber only available in Black.
- Replacement Rubber - 2359BM.

Dimensions: Projection 3.25" Base Diameter 2.25"



DOOR STOPS



All Prices in US Dollars - Prices Subject to Change Without Notice
Please Check with Customer Service for Up to Date Pricing.



Moorestown Upright Floor Door Stop

		Standard	Distressed	ETERNA
STP015	Moorestown Upright Floor Door Stop	180.00	198.00	216.00



Moorestown Upright Floor Door Stop with Magnet Holder

		Standard	Distressed	ETERNA
STP015M	Moorestown Floor Door Stop with Magnet Holder	215.00	237.00	258.00



Moorestown Wall Mount Door Stop

		Standard	Distressed	ETERNA
STP017	Moorestown Wall Mount Door Stop	180.00	198.00	216.00



Moorestown Wall Mount Door Stop with Magnet Holder

		Standard	Distressed	ETERNA
STP017M	Moorestown Wall Mount Door Stop with Magnet Holder	215.00	237.00	258.00

Replacement Rubber

		Standard
2359	Replacement Rubber for STP015 and STP017	5.60
2359B	Replacement Black Rubber for STP015 and STP017	7.84
2359BM	Replacement Black Rubber for STP015M and STP017M. Magnet rubber only available in black.	25.75

Moorestown Upright Floor Door Stop



STP015 Moorestown Upright Floor Door Stop

- Moorestown design coordinates with our Moorestown Suited Hardware.
- Features: Solid CNC Machined Brass, Heavy Duty.
- Packed: 1 per box with matching wood screws and hanger bolt and expansion shield.
- Weight: 0.66 lbs. per box.
- Replacement Rubber - 2359.
- Black Replacement Rubber available at additional price - 2359B.

Dimensions: Height 2.75" Base Diameter 2.25"

Moorestown Upright Floor Door Stop with Magnet Holder

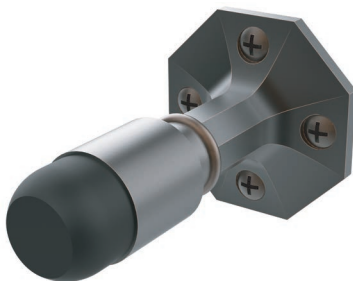


STP015M Moorestown Upright Floor Door Stop with Magnet Holder

- Moorestown design coordinates with our Moorestown Suited Hardware.
- Features: Solid CNC Machined Brass, Heavy Duty.
- Neodymium Supermagnets are concealed within the rubber bumper. Supplied with a brass plate and powdercoated steel insert for mounting to the door sash.
- Packed: 1 per box with matching wood screws and hanger bolt and expansion shield.
- Weight: 0.66 lbs. per box.
- Rubber only available in Black.
- Replacement Rubber - 2359BM.

Dimensions: Height 2.75" Base Diameter 2.25"

Moorestown Wall Mount Door Stop



STP017 Moorestown Wall Mount Door Stop

- Moorestown design coordinates with our Moorestown Suited Hardware.
- Features: Solid CNC Machined Brass, Heavy Duty.
- Packed: 1 per box with matching wood screws and hanger bolt and expansion shield.
- Weight: 0.66 lbs. per box.
- Replacement Rubber - 2359.
- Black Replacement Rubber available at additional price - 2359B.

Dimensions: Projection 3.25" Base Diameter 2.25"

Moorestown Wall Mount Door Stop with Magnet Holder



STP017M Moorestown Wall Mount Door Stop with Magnet Holder

- Moorestown design coordinates with our Moorestown Suited Hardware.
- Features: Solid CNC Machined Brass, Heavy Duty.
- Neodymium Supermagnets are concealed within the rubber bumper. Supplied with a brass plate and powdercoated steel insert for mounting to the door sash.
- Packed: 1 per box with matching wood screws and hanger bolt and expansion shield.
- Weight: 0.66 lbs. per box.
- Rubber only available in Black.
- Replacement Rubber - 2359BM.

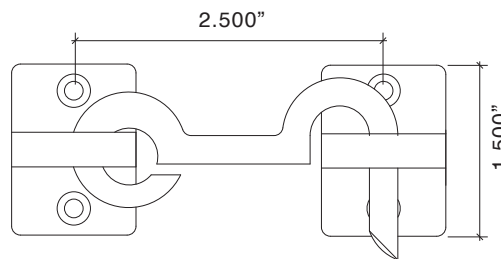
Dimensions: Projection 3.25" Base Diameter 2.25"

Cabin Door Hook



2410 Cabin Door Hook

- Solid Forged Brass
- Packed 10 pcs. per box wit wood screws
- 2.8 lbs. per box



All Prices in US Dollars - Prices Subject to Change Without Notice
Please Check with Customer Service for Up to Date Pricing.



Cabin Door Hook

		Standard	Distressed	ETERNA
2410	Cabin Door Hook	54.10	60.28	64.92